



Quick Start Guide

synchroscience
by M-AUDIO®

1. About the Conectiv Drivers

Conectiv ships with a special set of audio drivers. These ASIO-compliant drivers enable your computer to process sound efficiently, provide low latency and high performance, and give full access to all of Conectiv's inputs and outputs when using audio applications such as Torq. You must install these drivers to get the best performance from Conectiv.

While your computer will recognize Conectiv even if these drivers are not installed, the included Torq software will not run and other audio applications may have undesirably high latency. Furthermore, audio applications may not have full access to all of Conectiv's inputs and outputs if the drivers are not installed.

We advise all users to install the Conectiv drivers using the instructions below.

PLEASE NOTE: Make sure Conectiv is not connected to your computer when you begin the installation. The following instructions will indicate when you should connect the interface to your computer.

2. Windows XP Installation

1. We recommend that you download the most recent Conectiv drivers by going to the Support > Drivers page at www.m-audio.com. This ensures that you have the newest drivers available. If you do not have Internet access, insert the SynchroScience CD-ROM into your computer to install the drivers that came with Conectiv.

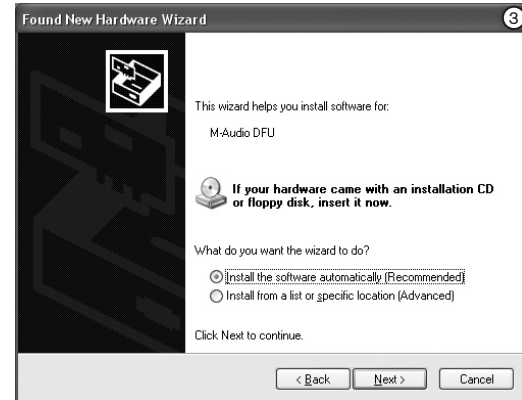
- a. If you are installing drivers from the SynchroScience CD-ROM, the computer will automatically display the interactive install screen ① when the CD-ROM is inserted. If your computer fails to launch this application, you can manually start it by clicking on Start > My Computer > SynchroScience.

Next, select your product from the menu and click "Install!"

- b. If you are installing drivers from www.m-audio.com, simply double-click the file once it has finished downloading.



2. Follow the driver installer's on-screen instructions.
3. At various points in this installation process, you may be notified that the driver being installed has not passed Windows Logo Testing. Click "Continue Anyway" to proceed with the installation.
4. Once the installer has completed, click "Finish."
5. Attach Conectiv to an available USB port.
6. Windows will identify the interface and will ask if you want to search the Internet for a driver. Select "No, not this time" and press "Next." ②
7. Windows will display a "Found New Hardware" Wizard.
8. Choose "Install software automatically" and click "Next." ③
9. Once the Wizard has completed, click "Finish."
10. Once the installation is complete, you will see a message stating, "Your new hardware is installed and ready to use."



3. Mac OS X Installation

1. We recommend that you download the most recent Conectiv drivers by going to the Support > Drivers page at www.m-audio.com. This ensures that you'll have the newest drivers available. If you do not have Internet access, insert the SynchroScience CD-ROM into your computer to install the drivers that came with Conectiv.
 - a. If you are installing drivers from the SynchroScience CD-ROM, a CD-ROM icon will appear on your desktop once the disc is inserted into your computer. Double-click this icon to view the contents of the disc. Next, double-click "Open Me." Finally, select your product from the drop-down menu on the welcome screen and click "Install!"
 - b. If you are installing drivers from www.m-audio.com, the downloaded file should automatically mount and display its contents on the desktop. If this file does not mount automatically, simply double-click the file once it has finished downloading to view its contents. Next, double-click the installer package.
2. Follow the driver installer's on-screen instructions.
3. When prompted, enter the administrator name and password for your computer.
4. Click "Restart" once the installer has completed the installation. Your computer will restart automatically.
5. Attach Conectiv to an available USB port to complete the installation.

4. Audio Connections

- Connect your turntables, CD players, or other line-level devices to Conectiv's RCA inputs. If you are using turntables that have a ground wire, be sure to connect each turntable's ground wire to the grounding connector located on the rear of the interface.
- Attach Conectiv's outputs to your DJ mixer, powered speakers, or other destination:
 - If you are using an external DJ mixer, connect both outputs A and B to separate line level inputs on your mixer.
 - If you are mixing through your DJ software and are routing Conectiv's outputs directly to an amplifier or powered speakers, connect output pair A to your destination device.
- Connect your headphones to the 1/4" headphone output on the front of the interface. Alternatively, if you are using an external DJ mixer, you may want to connect your headphones to the DJ mixer's headphone output.
- If you'd like to use a microphone, connect a dynamic microphone to Conectiv's 1/4" microphone input on the front.
- Attach Conectiv to an available USB port on your computer using the provided USB cable.
- If you want to use Conectiv in standalone mode for the purpose of using its phono preamps without a host computer, or if your computer cannot supply sufficient bus power to Conectiv, attach an optional power adapter to the DC Power jack on the rear panel. The power adapter can be ordered from the M-Audio Webstore (www.m-audio.com).

5. About Torq

Conectiv comes bundled with SynchroScience Torq. This powerful DJ application allows you to play a gig without having to carry heavy cases of records or CDs to the event. It also enables you to quickly access and beat-match your entire music library on a laptop while Conectiv acts as the central hub, interfacing between the computer, CD players, turntables, and the sound system.

Install Conectiv Drivers First! You must install Conectiv's drivers *before* launching Torq. Be sure to install the drivers *before* running Torq.

To install Torq on Windows XP:

1. Insert the SynchroScience CD-ROM into your computer. The computer should automatically display an interactive install screen when the CD-ROM is inserted. If your computer fails to launch this application, you can manually start it by clicking on Start > My Computer > SynchroScience.
2. Select "Torq" from the drop-down menu and click "Install."
3. Follow the installer's on-screen instructions.
4. Once the Wizard has completed, click "Finish."

Torq is now installed on your computer. To begin using the program, attach Conectiv to your computer and launch Torq.

To install Torq on Mac OS X:

1. Insert the SynchroScience CD-ROM into your computer. A CD-ROM icon will appear on your desktop once the disc is inserted into your computer. Double-click this icon to view the contents of the disc.

2. Double-click the "Open Me" icon.
3. Select "Torq" from the drop-down menu and click "Install"
4. A new window will appear asking where you would like to copy Torq's application files. Select a location and press "Install here."
5. Click "Close" once the installer has completed the installation.

Torq has now been copied onto your computer. To begin using Torq, attach Conectiv to your computer and double-click the Torq icon to launch the software.

To learn more about Torq, please refer to the user guide found on the SynchroScience CD-ROM.

6. Additional Information and Support

The M-Audio website (www.m-audio.com) contains the latest SynchroScience drivers and program updates as well as useful links to news stories, FAQs, and technical support. We recommend checking this site regularly to ensure you have the latest drivers and most up-to-date information about your SynchroScience products.

© 2006 Avid Technology, Inc. All rights reserved. Product features, specifications, system requirements and availability are subject to change without notice. Avid, M-Audio, Conectiv, SynchroScience and Torq are either trademarks or registered trademarks of Avid Technology, Inc. All other trademarks contained herein are the property of their respective owners.

WARNING: This product contains chemicals, including lead, known to the State of California to cause cancer, and birth defects or other reproductive harm. **Wash hands after handling.**

